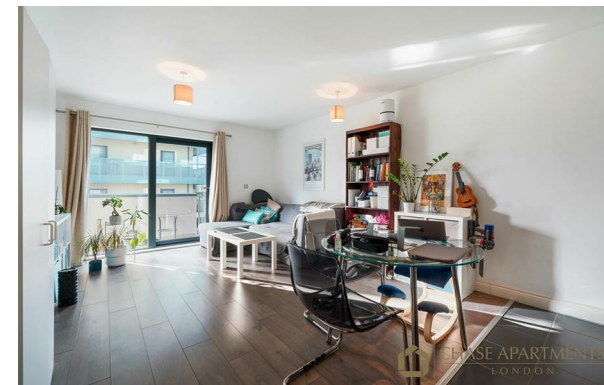




CHASE APARTMENTS
LONDON



The Lockhouse, 35 Oval Road, NW1 7BF NW1 7BF

£2,200 PCM

- 24 Hour concierge
- Walking distance to Primrose Hill & Camden Town
- Approx 528 sq foot
- Available now
- Residents Gym
- Open Plan Kitchen
- Balcony
- Double bedroom and fully furnished
- Fully Furnished
- Wood flooring

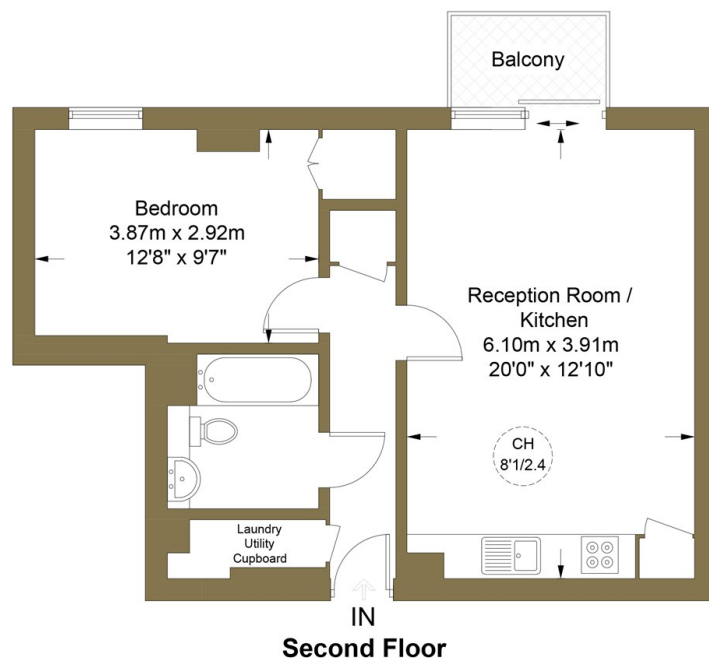
Grosvenor Waterside, 32 Gatliff Road, Belgravia, London, SW1W 8QN
02077225022

<http://www.chaseapartments.com/>



The Lockhouse NW1

Approximate Gross Internal Area = 49.1 sq m / 528 sq ft



This plan is for layout guidance only. Not drawn to scale unless stated. Windows and door openings are approximate. Whilst every care is taken in the preparation of this plan, please check all dimensions, shapes and compass bearings before making any decisions reliant upon them. (ID907797)



CHASE APARTMENTS
LONDON

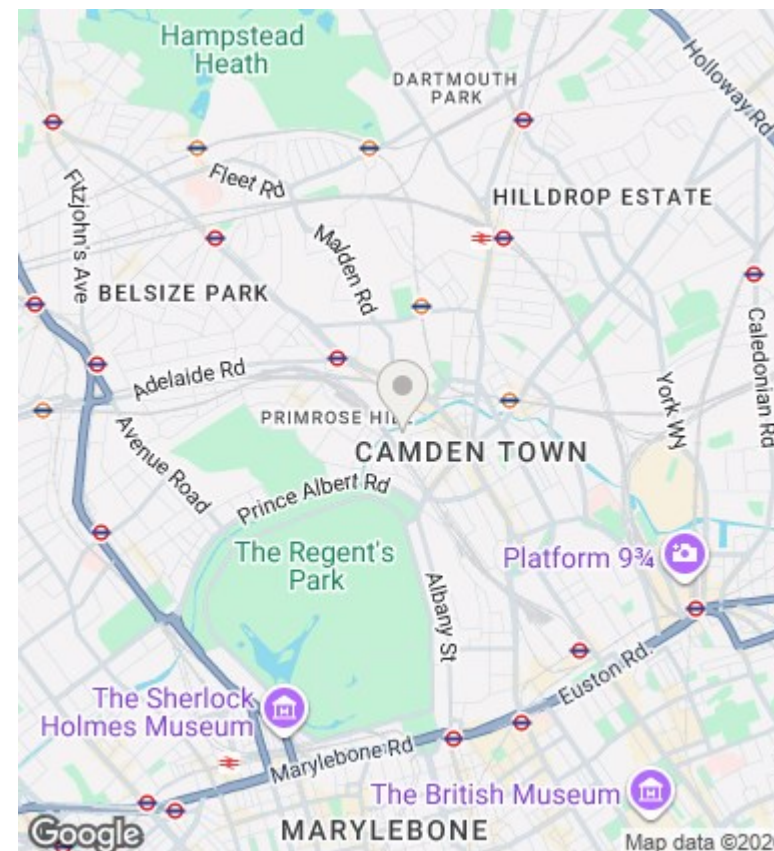
Viewings

Viewings by arrangement only.
Call 02077225022 to make an appointment.

Council Tax Band

E

EPC Rating:



Energy Efficiency Rating

	Current	Potential
Very energy efficient - lower running costs		
(92 plus) A		
(81-91) B		
(69-80) C		
(55-68) D		
(39-54) E		
(21-38) F		
(1-20) G		
Not energy efficient - higher running costs		
England & Wales		EU Directive 2002/91/EC